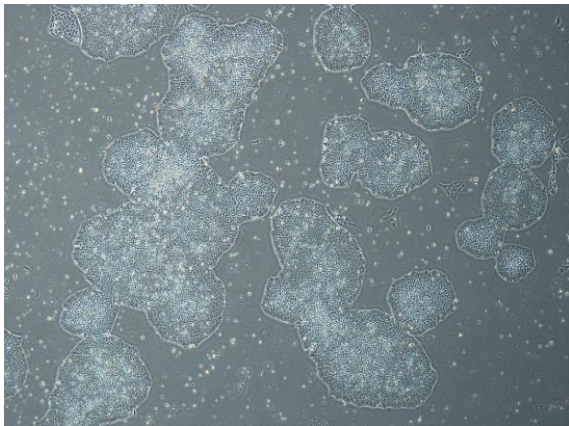
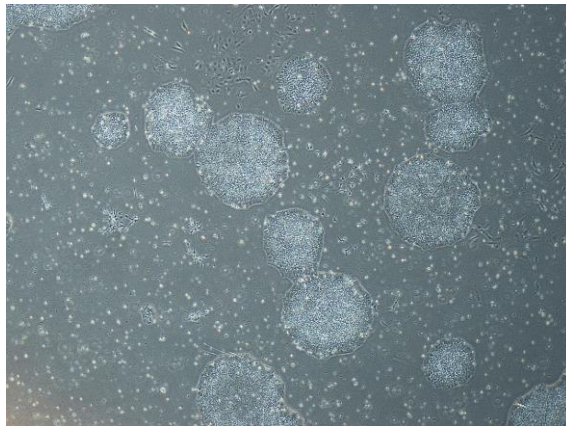


【 CiRA-j-1189 】 Morphology of iPSC colonies

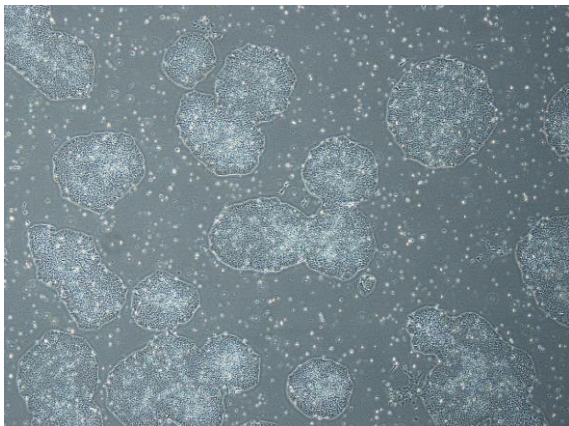
CiRA-j-1189-A: passage-3



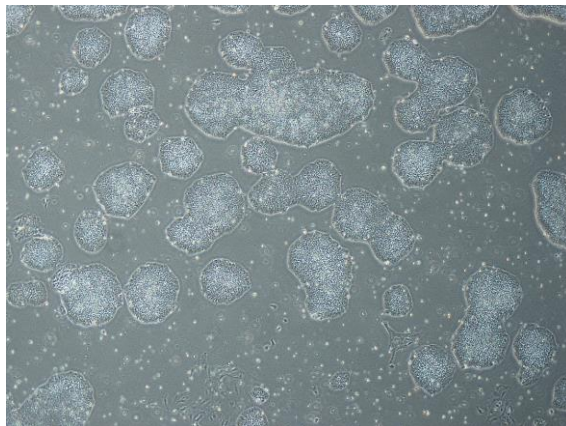
CiRA-j-1189-B: passage-3



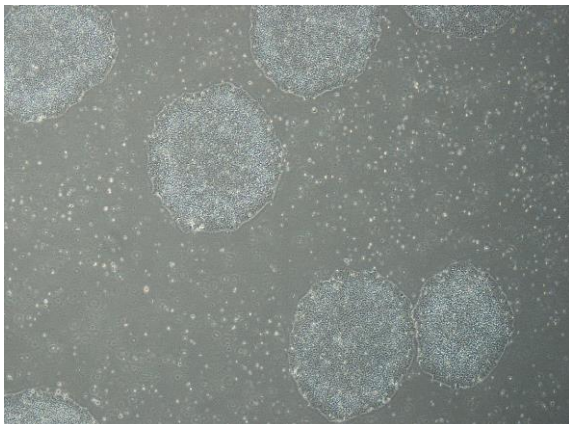
CiRA-j-1189-C: passage-3



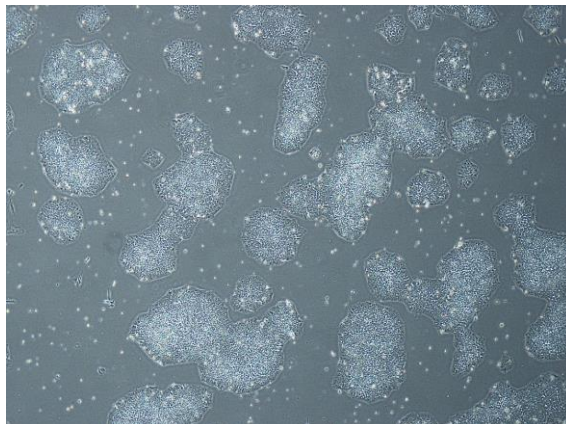
CiRA-j-1189-D: passage-3



CiRA-j-1189-E: passage-3



CiRA-j-1189-F: passage-3



(All images were captured at 4x magnification)